

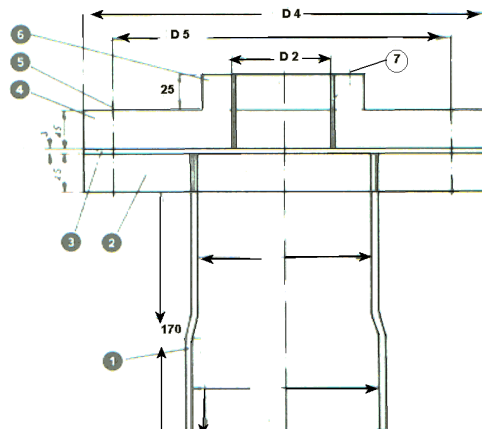
STÜWA K – Wellheads corrosion resistant

Polyurethane, with galvanized thread/ stainless steel on request						
DN	Connection inch	Female size mm	Flange- \emptyset mm	Scribed circle mm	Bolts pc.	Weight Kg/ pc.
80	1" - 1¼"	88	245	205	6	3,6
100	1¼" - 1½"	113	245	205	6	4,5
115	1¼" - 2"	125	245	205	6	4,4
125	1¼" - 2"	140	245	205	6	4,3
150	1¼" - 3"	165	245	205	6	4,2
200	1¼" - 4"	225	300	260	8	6,5
300	1¼" - 4"	330	450	400	8	9,5

U-PVC						
DN	Connection inch	Female size mm	Flange- \emptyset mm	Scribed circle mm	Bolts pc.	Weight Kg/ pc.
80	1" - 2"	88	240	200	6	3,6
100	1" - 2"	113	240	200	6	4,5
115	1" - 2"	125	240	200	6	4,4
125	1" - 3"	140	240	200	6	4,3
150	1" - 3"	165	240	200	6	4,2
175	1" - 4"	195	325	275	6	8,0
200	1" - 4"	225	325	275	6	8,2
250	1" - 4"	280	380	330	8	13,0
300	1" - 4"	330	425	375	8	14,0
350	1" - 4"	400	500	450	8	21,0

Wellheads over above mentioned sizes can be made on request.

Wellheads are inclusive stainless steel bolts and gaskets.



- 1: PVC-pipe with glued socket
- 2: Lower part of flange, tight screwed
- 3: Rubber gasket
- 4: Upper part of flange
- 5: Threads- and bolts holes M16
- 6: Thread extension
- 7: Plastic cable insert PG 16